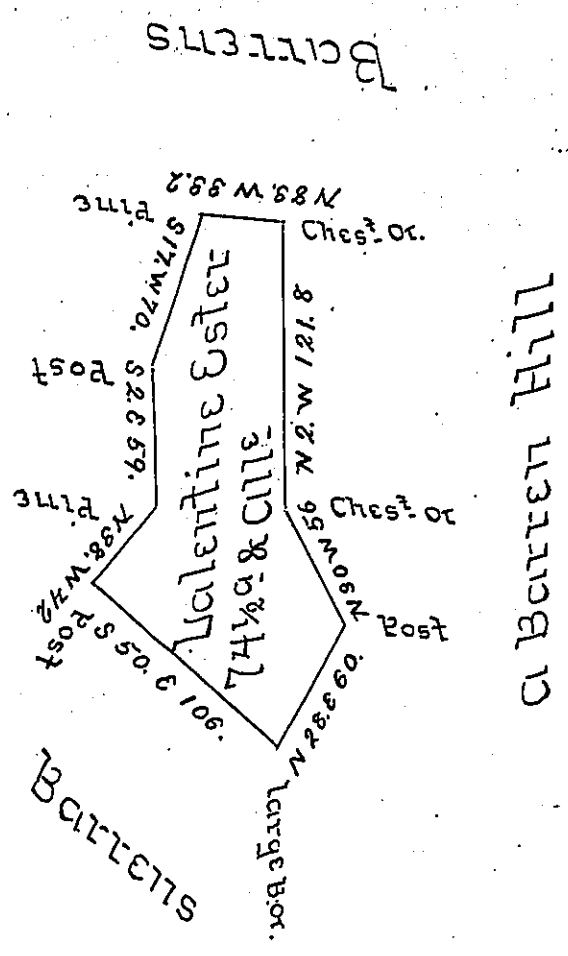


Near Mallis's Land in Possession of Neiswanger



Situated in Morris's Cove between the Tract of Land that Abraham Neiswanger now lives on, and the Middle Ridge, including a piece of Timber's Land in Woodberry Township Bedford County and Surveyed the 8<sup>th</sup> day of February 1787 in Pursuance of a Warrant dated the 29<sup>th</sup> day of June 1786.

George Woods U.S.

To John Lukens Esq<sup>r</sup> }  
Surveyor General - }

IN TESTIMONY that the above is a copy of the original remaining on file in the Department of Internal Affairs of Pennsylvania, made conformably to an Act of Assembly approved the 16th day of February, 1833, I have hereunto set my Hand and caused the Seal of said Department to be affixed at Harrisburg, this eleventh day of October 1904.

*George R. Brown*  
Secretary of Internal Affairs